



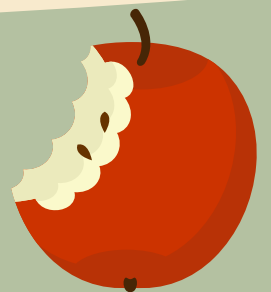
KENTUCKY CRUNCH



IT'S KENTUCKY CRUNCH TIME!!

Join the Kentucky Department of Agriculture in celebrating National Farm to School Month this October by participating in the Kentucky Crunch all month long!

WHY KENTUCKY CRUNCH?!



All October, we encourage CNP staff members to procure local varieties of fresh produce, exhibiting the strength and positive impacts of Kentucky's Farm to School program on our students. Integrating fresh fruits and vegetables into the school meals program provides opportunities for nutrition education in the cafeteria by showing the importance of knowing where food comes from and supporting local communities.



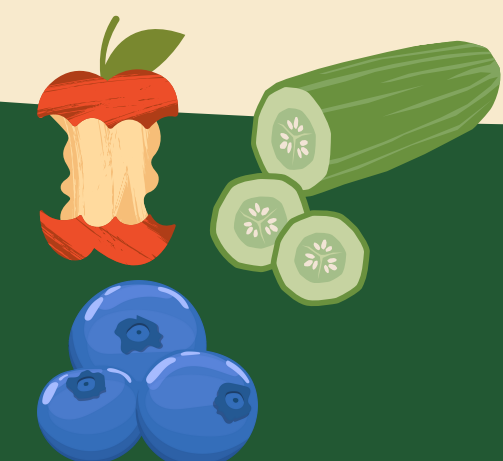
#KYCRUNCHTIME

#KYFARMTOSCHOOL

Each time you CRUNCH into your favorite local variety of fruit or vegetable, use these hashtags so we can share!

NEED HELP FINDING A FARMER?

Tina Garland, Administrative Branch Manager:
tina.garland@ky.gov



KENTUCKY
DEPARTMENT OF
AGRICULTURE
FOODS DIVISION

